



Security money chests

Provide unsurpassed protection of your valuables from unauthorized access.

Features

- B-rated burglary construction (1/2" solid steel door and 1/4" solid steel body)
- Heavy duty hinges and all sides seamlessly welded
- Armed with drill resistant steel hard plate construction
- Hefty solid chrome plated locking bolt with independent re-locking device
- Full length locking bar to deter prying attack on hinges
- 4 anchor holes in the bottom
- Adjustable shelf

Lock options

- E - Electronic Lock
 - C - Changeable Combination Lock
 - K - Dual Key Lock
- [Double Bitted Key Lock is optional.]



S852C

Dimensions

Model	Outside (mm)			Inside (mm)			Weight (kgs)	Shelf
	H	W	D	H	W	D		
S838E S838C	380 15"	400 15 3/4"	320 12 3/5"	368 14 1/2"	388 15 2/7"	248 9 3/4"	58 128 lbs	1
S852E S852C	520 20 1/2"	400 15 3/4"	460 18 1/9"	508 20"	388 15 2/7"	402 15 5/6"	73 161 lbs	1
S854E S854C	540 21 1/4"	485 19"	575 22 2/3"	528 20 4/5"	470 18 1/2"	500 19 2/3"	97 213 lbs	1
S874E S874C	740 29 1/7"	485 19"	575 22 2/3"	718 28 1/4"	470 18 1/2"	500 19 2/3"	123 271 lbs	1
S894E S894C	940 37"	584 23"	610 24"	923 36 1/3"	572 22 1/2"	535 21"	165 363 lbs	2



In-floor safes

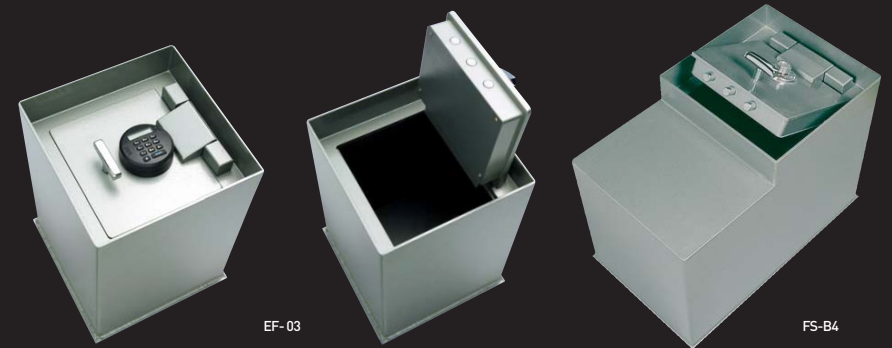
The smartest way to conceal and keep your valuables without others' knowing the safe's location

Features

- In-floor safe designed for installation in concrete
- B-rated burglary construction (1/2" solid steel door and 1/4" solid steel body)
- Heavy duty hinges (Coil spring makes it easy to open and close the door)
- All sides seamlessly welded
- Armed with drill resistant steel hard plate construction
- Hefty solid chrome plated locking bolt with independent re-locking device
- Full length locking bar to deter prying attack on hinges
- Steel dust cover included for flush floor installation and concealment
- 9" x 11" door opening
- Various sizes available according to customer preference

Lock options

- E - Electronic Lock
- C - Changeable Combination Lock
- K - Dual Key Lock (Double Bitted Key Lock is optional.)



EF-03

FS-B4

Dimensions

Model	Outside (mm)			Inside (mm)			Weight (kgs)
	H	W	D	H	W	D	
EF-01 FS-B1	310 12 1/5"	356 14"	356 14"	188 7 2/5"	344 13 1/2"	344 13 1/2"	51 112 lbs
EF-02 FS-B2	410 16 1/7"	356 14"	356 14"	288 11 1/3"	344 13 1/2"	344 13 1/2"	60 132 lbs
EF-03 FS-B3	516 20 1/3"	356 14"	356 14"	394 15 1/2"	344 13 1/2"	344 13 1/2"	68 150 lbs
EF-04 FS-B4	457 18"	610 24"	356 14"	335 13 1/5"	598 23 1/2"	344 13 1/2"	72 158 lbs

